



CLINICAL/PROFESSIONAL PRACTICE POSITION DESCRIPTION

Position	Senior Lecturer in Veterinary Pathology
Level/Classification	ACSLC
Reports to	Dean of Veterinary Medicine
Division	School of Veterinary Medicine
College	College of Environmental and Life Sciences

Position Purpose

A Senior Lecturer (Level C) is expected to have developed a strong clinical professional focus, evidenced by advanced practice status and/or research outputs in quality research publications. This position makes a significant contribution to the teaching effort of the Discipline through the preparation and delivery of lectures and tutorials, program coordination, and supervision of honours and postgraduate students. Academic staff at this level will also be involved in a broad range of administrative and service functions in the College and across the University, and professional activities within the discipline.

About Murdoch University

Murdoch University helps people discover how to make a difference, through education and research endeavor, and remains one of the most inclusive universities in the country, providing students with quality education and recognised academic standing within an engaging and caring environment. We are a university for all, irrespective of background and social standing with a focus on social equity, self-direction and freedom of thought and belief.

With strong links to government, business and the community, Murdoch University helps people discover how to make a difference. We are a young, innovative and enterprising university with more than 23,000 students and 1,700 staff across Perth, Singapore and Dubai. We are committed to high quality education, innovative research, and strong community engagement both locally and internationally.

Our [Strategic Plan and Future Horizon 2017-2027](#) outlines an ambitious blueprint for development and growth, with a focus on one purpose: to be a creative force for current and future generations.

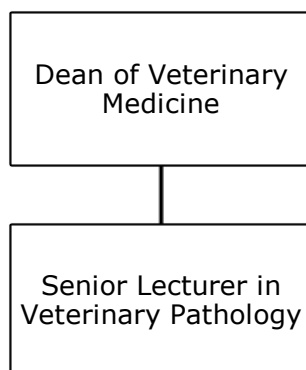
We are clear about our two core goals: to educate free thinkers who thrive in society and are sought after by employers; and, to provide life changing solutions for the world's big challenges through our outstanding translational research and innovative practice.

About the Work Area

The School of Veterinary Medicine is responsible for the training of veterinary science graduates and the degree program has received international accreditation. A central part of the training is development of core clinical competencies and as part of this process veterinary science students undertake training in our hospital, clinics and clinical services.

Veterinary Pathology is a key discipline within the School of Veterinary Medicine, comprising anatomic and clinical pathology sections. Veterinary anatomic pathology is a core subject within the internationally accredited veterinary science degree at Murdoch University. The discipline also contributes to research in pathology, and supports a diagnostic service (necropsy and histopathology) for The Animal Hospital and externally to the community of Western Australia. Teaching pathology and related subjects (e.g. histology) extends to other courses within the College of Environmental and Life Sciences.

Reporting Relationships



Key Responsibilities / Duties

1. Clinical or Professional Practice - Research Engagement

At Level C, clinical/professional practice academics would be expected to have a more senior role in research projects such as designing the data collection protocols, analysis, some interpretation and responsibility in the writing up of research findings.

2. Clinical or Professional Practice - Teaching

An effective contribution to clinical or professional teaching as evidenced by:

- A major contribution to teaching in veterinary anatomic pathology, including preparing and delivering lectures, tutorials, seminars, practical classes, demonstrations, workshops, student field excursions, clinical sessions and studio sessions, and marking and assessments.
- Develop and practice innovative teaching and learning methods
- Consult with, and provide advice to, undergraduate, postgraduate and HDR students.
- Initiate and develop course material, and undertake course and program coordination.
- Supervise major honours or postgraduate research projects, as well as postgraduate course work.
- Active participation in key aspects of engagement in teaching and learning within and beyond the University e.g. high schools outreach, first year orientation, academic advising
- Participate in the after-hours roster

3. Service and Leadership

An effective contribution to clinical or professional practice as evidenced by:

- Contribution to the diagnostic service in anatomic pathology in support of The Animal Hospital at Murdoch University and externally submitted case material; the conduct of necropsies and provision of histopathology diagnosis.
- High level of involvement in professional activities at national level;
- Mentoring Level A and B staff in teaching practice.
- High level responsibilities in professional associations and within their specialty;

Guiding Principles and Values / Code of Ethics and Code of Conduct

The founding principles upon which Murdoch University was established continue unabated today. We continue to be guided by the principles of:

- Equity and Social Justice
- Opportunity
- Sustainability
- Global Responsibility

These Murdoch principles come to life through our culture as evidenced by being an institution where the following are clear:

- Integrity
- Respect and Diversity
- Purpose
- Excellence and Future-focus

All staff will comply with the University's Code of Ethics and Code of Conduct and demonstrate a commitment to its Equity, Diversity and Safety principles and the general capabilities of personal effectiveness, working collaboratively and demonstrating a focus on results.

All Staff are to complete a Contribution Development Review Annually. Details of the University policies on Development Review can be accessed [here](#). A commencing Development Review should be completed within 3 months of commencement.

Selection Criteria

1. A veterinary degree registrable by the Veterinary Surgeons' Board of Western Australia, and board certification in veterinary pathology (e.g. Dip ACVP, Dip ECVP, FANZCVS, or equivalent) or relevant experience
2. Demonstrated experience in teaching veterinary pathology at the undergraduate and postgraduate level.
3. Demonstrated ability to work under broad direction only, exercise initiative in undertaking responsibilities, work effectively as a team member and play a leadership role in teaching and learning activities.
4. Demonstrated success in supervising Honours, postgraduate (e.g. residents) and HDR students.
5. Demonstrated knowledge of contemporary approaches to curriculum and pedagogy.
6. Demonstrated experience and success innovative course and program coordination and design.
7. Well-developed interpersonal skills, past success in working effectively as a member of an interdisciplinary and collegial team, and the ability to take on a leadership role at the School level.
8. Demonstrated high levels of written and oral communication skills in English.

Work Requirements

1. Ability to work outside of normal office hours when required.
2. Be able to provide evidence of appropriate vaccination or immunity following the University's Immunisation Policy.

Probationary Review

This position may be subject to a probationary period, during which time the academic staff member is required to meet set probationary objectives and pass a probationary review. Probationary objectives are set following appointment to the position and confirmed at the first Academic Contribution Development Review (ACDR).

Academic Career Framework

Murdoch University's Academic Career Framework provides a transparent, equitable and consistent approach to probation and promotion as well as outcome and workload expectations. Please refer to the Murdoch University Academic Career Framework for performance criteria and expectations for all academic positions.